

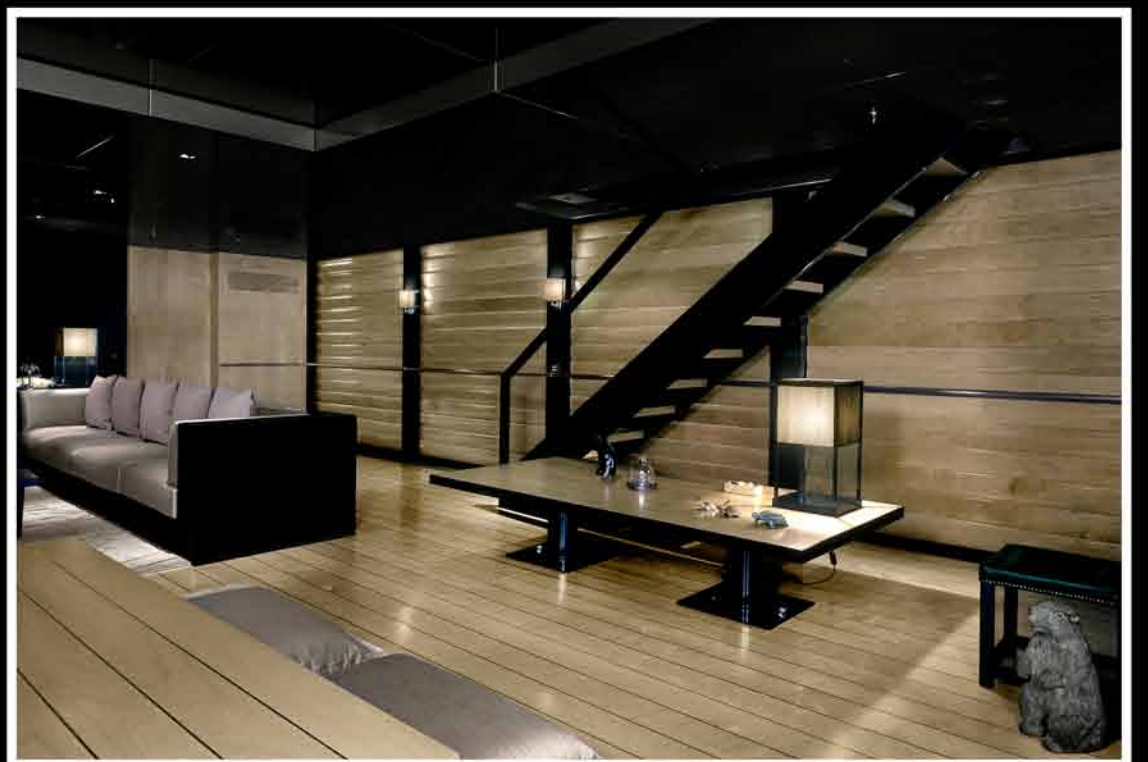
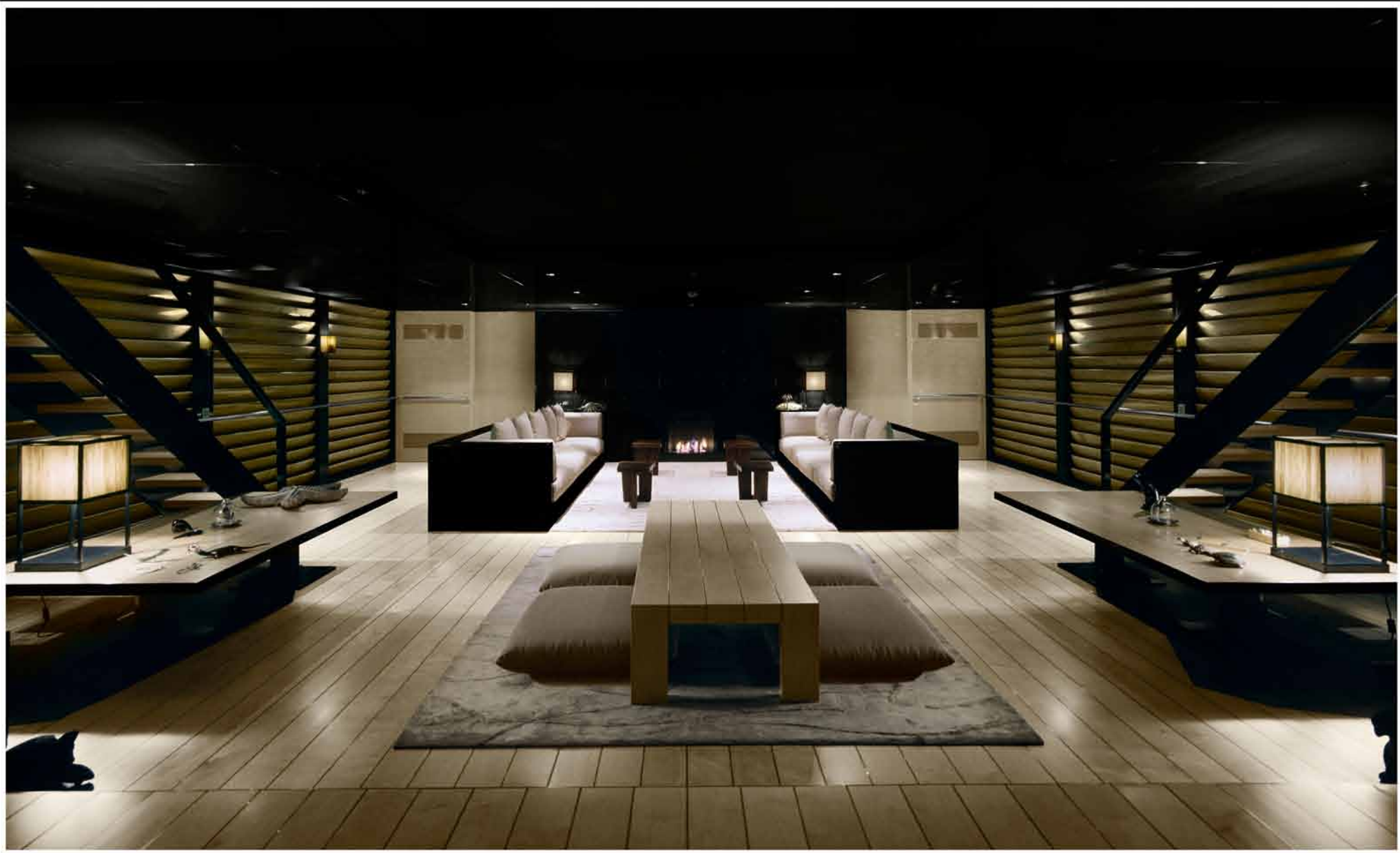
CODECASA 65

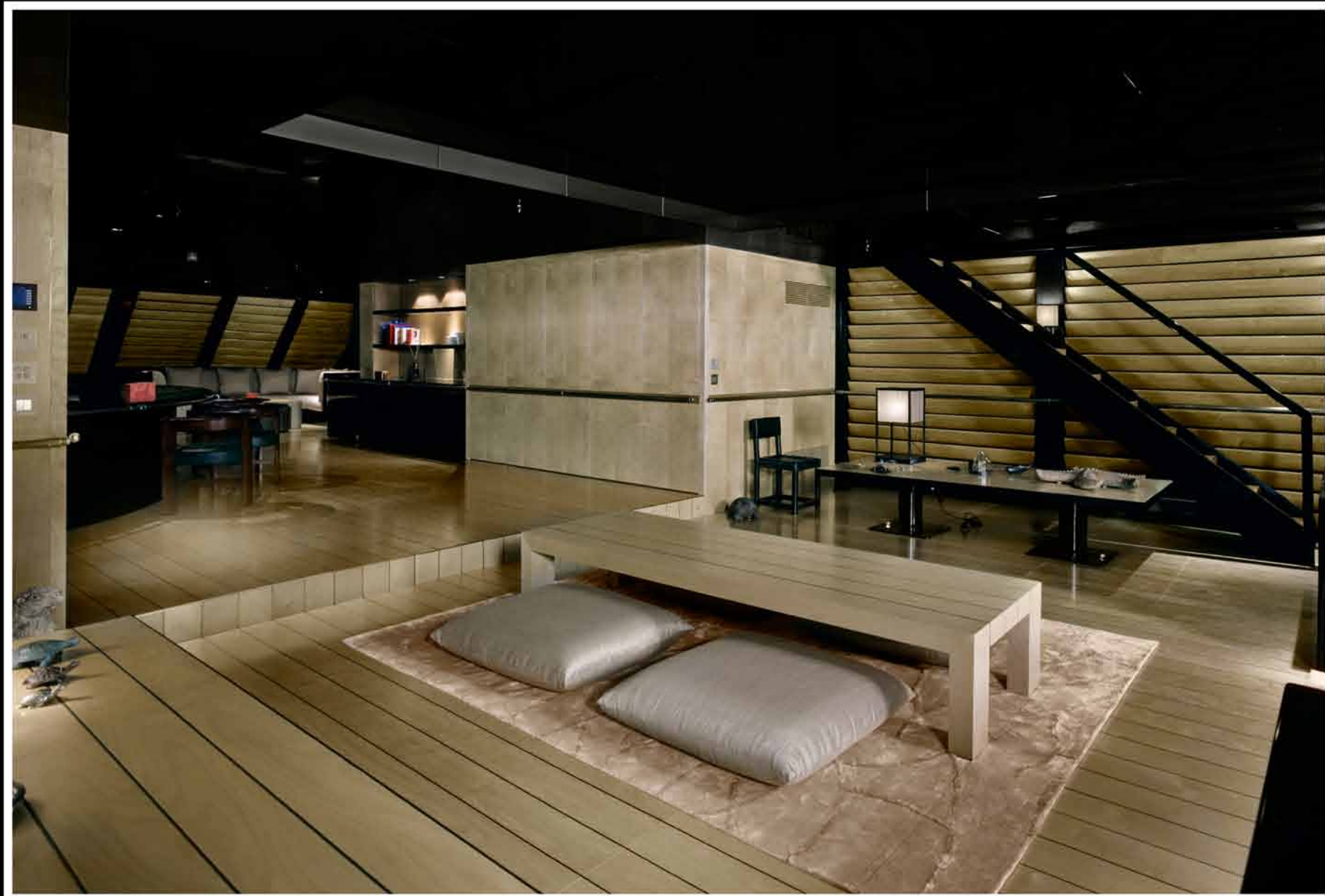


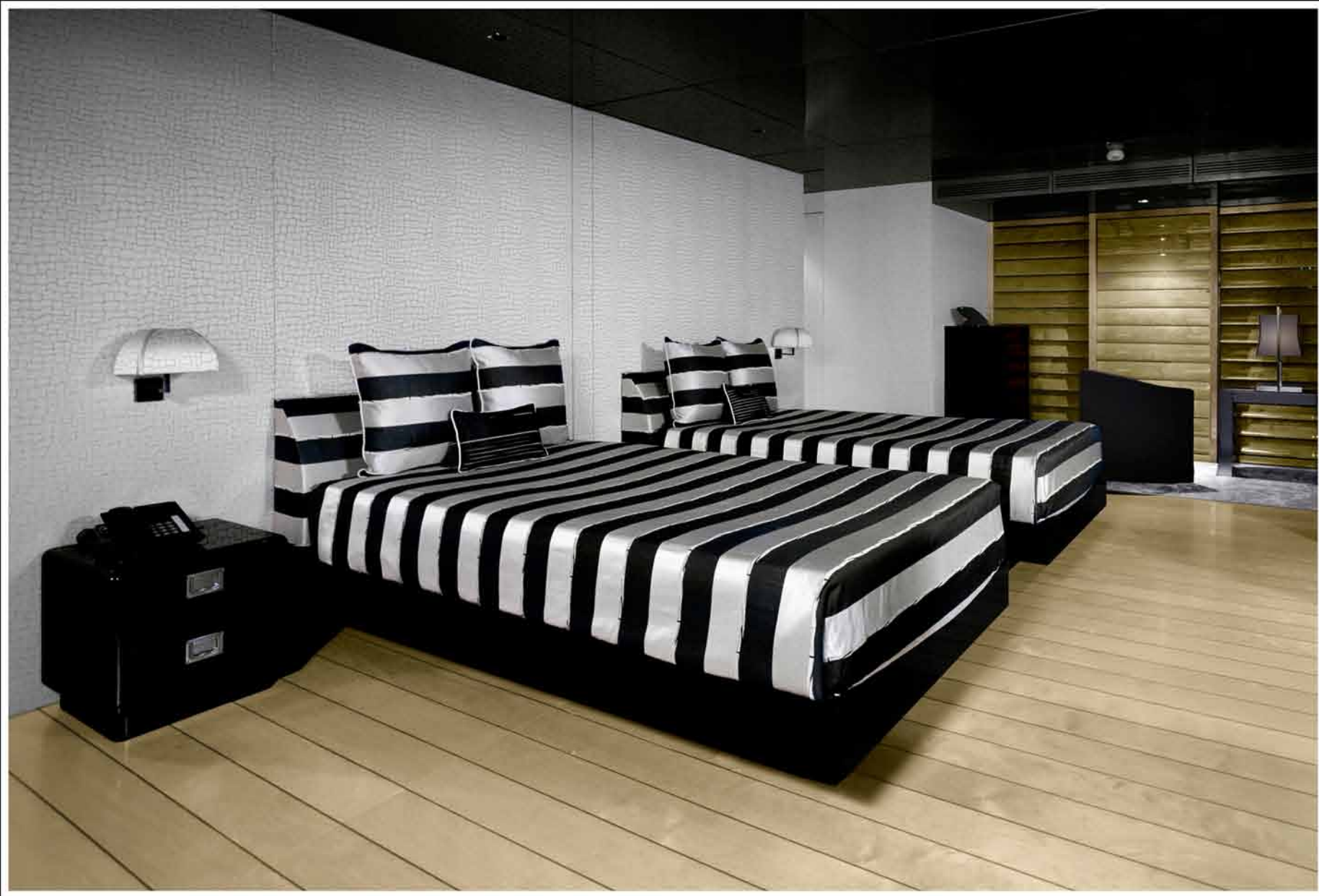
SINCE 1825



MAIN

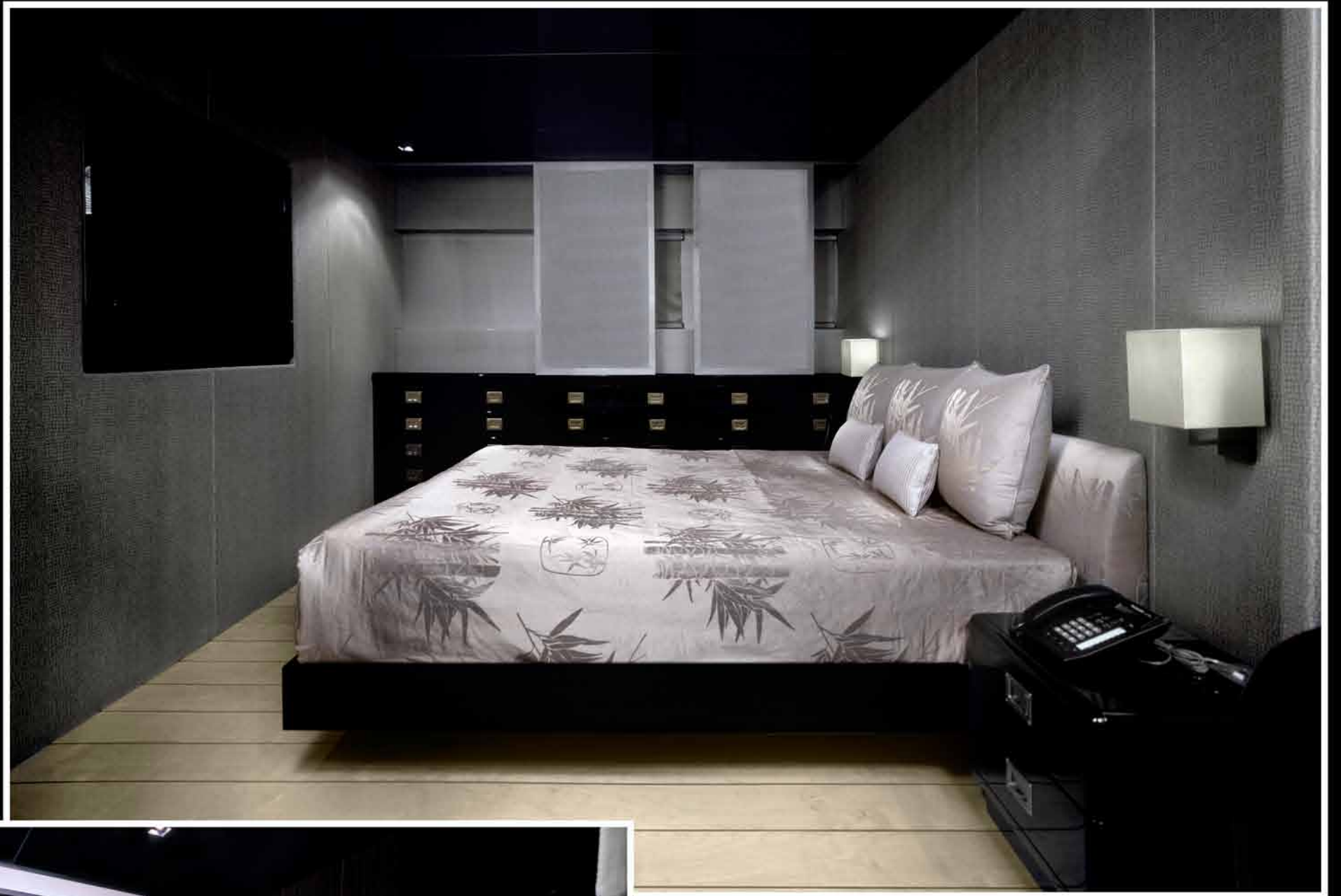


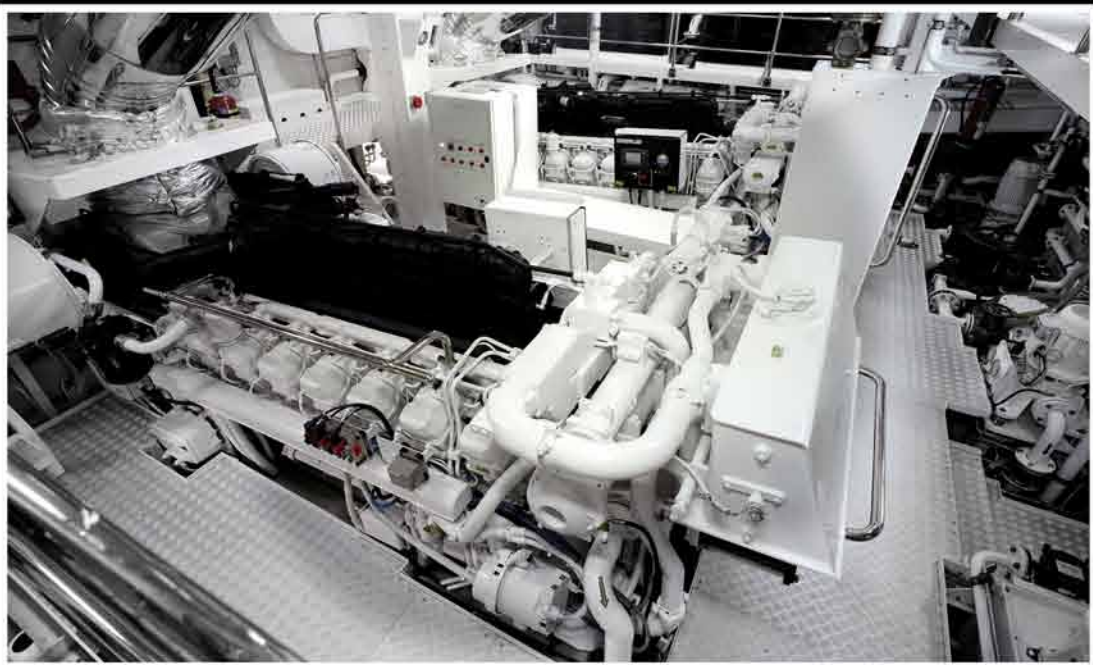




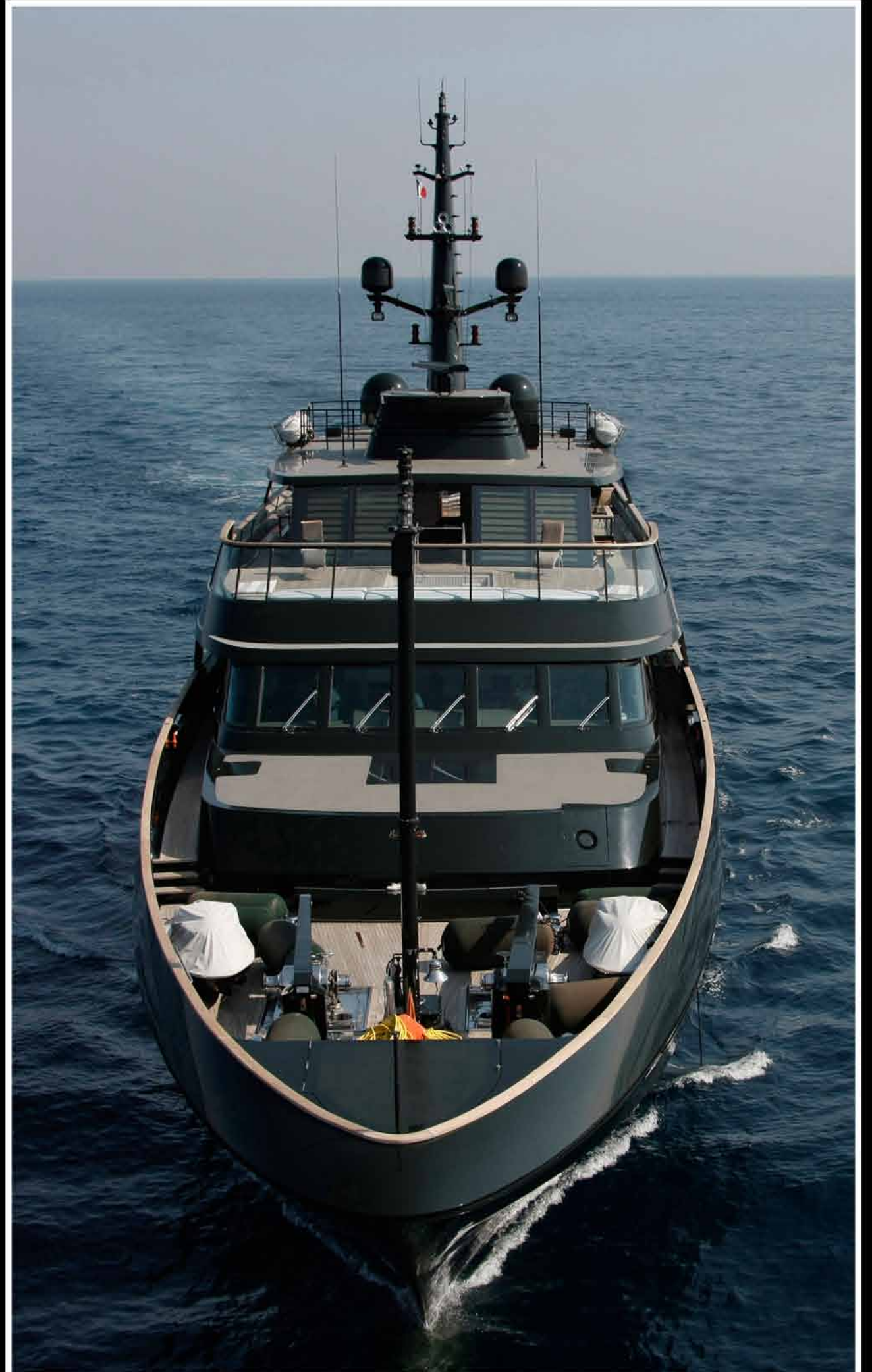
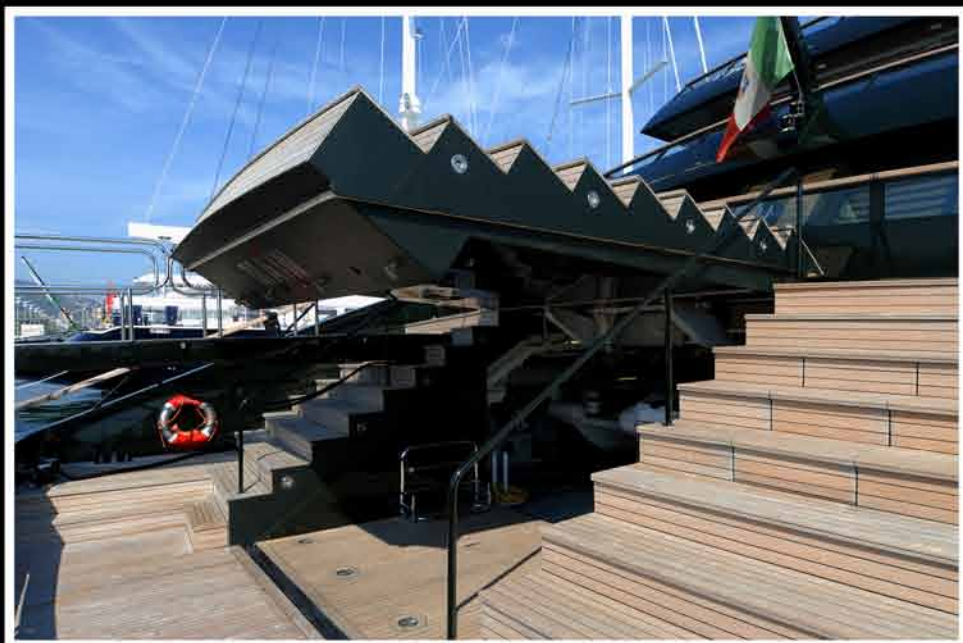




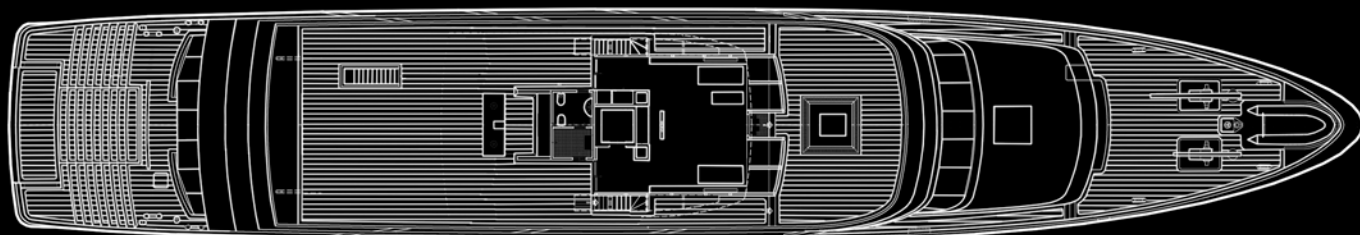




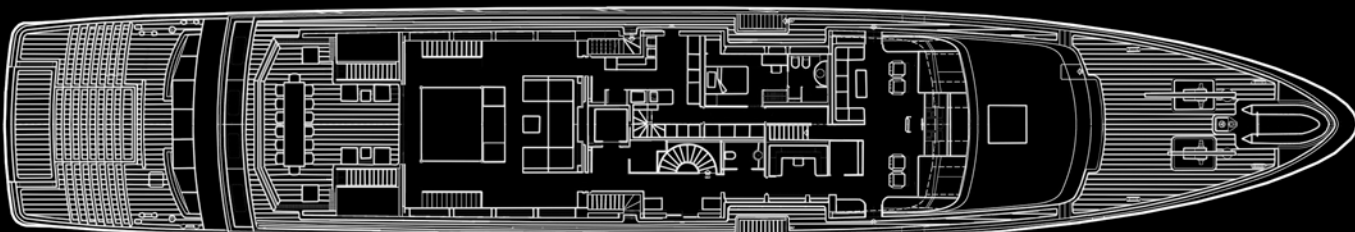




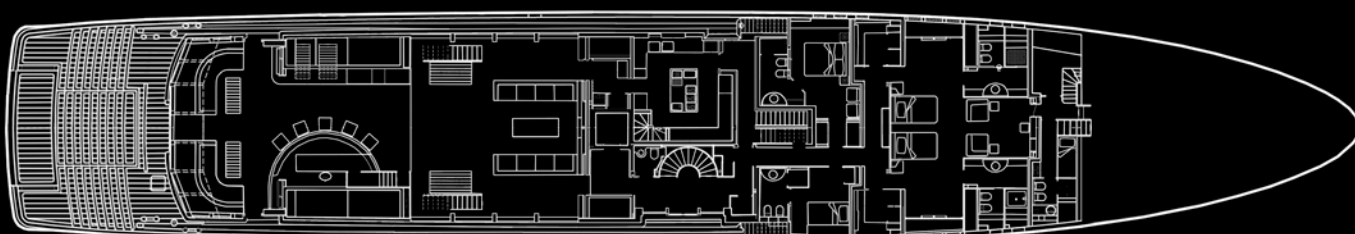




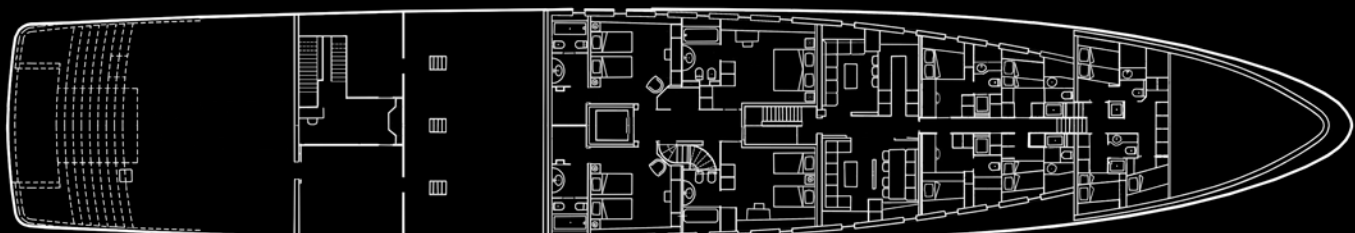
SUN DECK



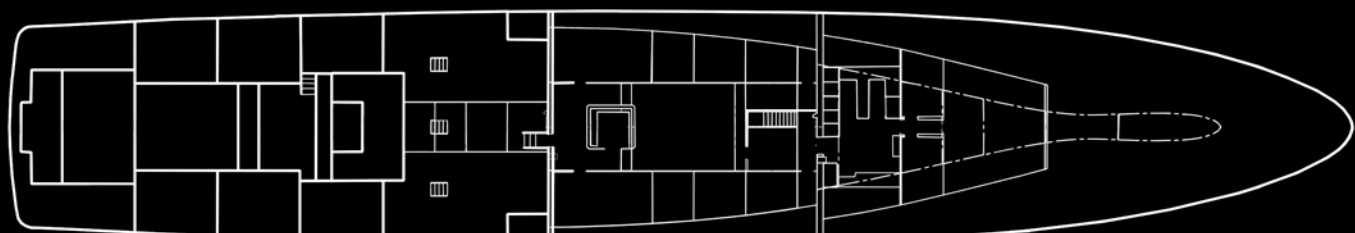
UPPER DECK



MAIN DECK



LOWER DECK



TOP-TANK DECK



MAIN
2008 HULL C 115

LENGTH OVERALL	65,00 METERS
LENGTH WATER LINE	56,50 METERS
BEAM	11,20 METERS
MAXIMUM DRAFT	3,70 METERS
HULL	HIGT TENSILE STEEL AH36
SUPERSTRUCTURE	ALUMINIUM 5083 H 111/H 321
CLASSIFICATION	LLOYD'S REGISTER MALTESE CROSS 100 A1 SSC "YACHT" MONO G6 + MALTESE CROSS LMC MCA COMPLIANT
MEDIUM LOAD DISPLACEMENT	800 TONS APPROX.
MAIN ENGINES	2X2482 HP CATERPILLAR 3516 B @ 1600 RPM
GENERATORS	3X175 KW CATERPILLAR 1X84 KW CATERPILLAR EMERGENCY GENERATOR
PROPELLERS	2 SCAFFRAN 6 FIX BLADES
MAXIMUM SPEED	17.00 KNOTS IN THE LIGHT DISPLACEMENT CONDITIONS
RANGE	6.000 NAUTICAL MILES @ 14 KNOTS
FUEL OIL CAPACITY	160.000 LITRES
FRESH WATER CAPACITY	30.000 LITRES
OWNER'S AND GUESTS'	1 OWNER'S SUITE
CABINS	6 GUESTS' CABINS
CREW CABINS	1 CAPTAIN'S CABIN 1 CHIEF ENGINEER CABIN 6 TWIN BED CABINS



SINCE 1825

CODECASA CANTIERI NAVALI spa - VIA AMENDOLA - 55049 VIAREGGIO - ITALIA - TEL. 0584-383221 - TELEFAX 0584-383531
E-MAIL: info@codecasayachts.com <http://www.codecasayachts.com>